

# RVPlasticParts

## RV-7, RV-9, Seatback Storage Tray Installation

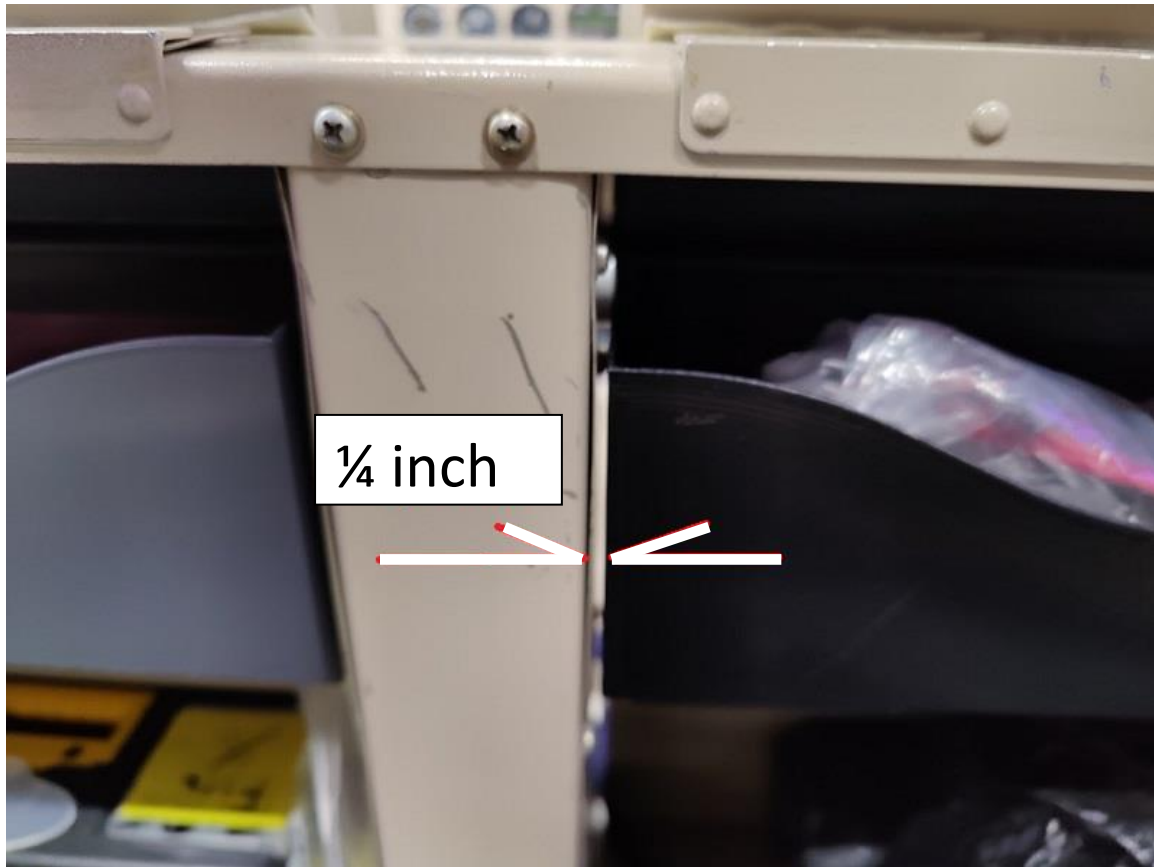
February 2023

When installed, the tray should look like this.



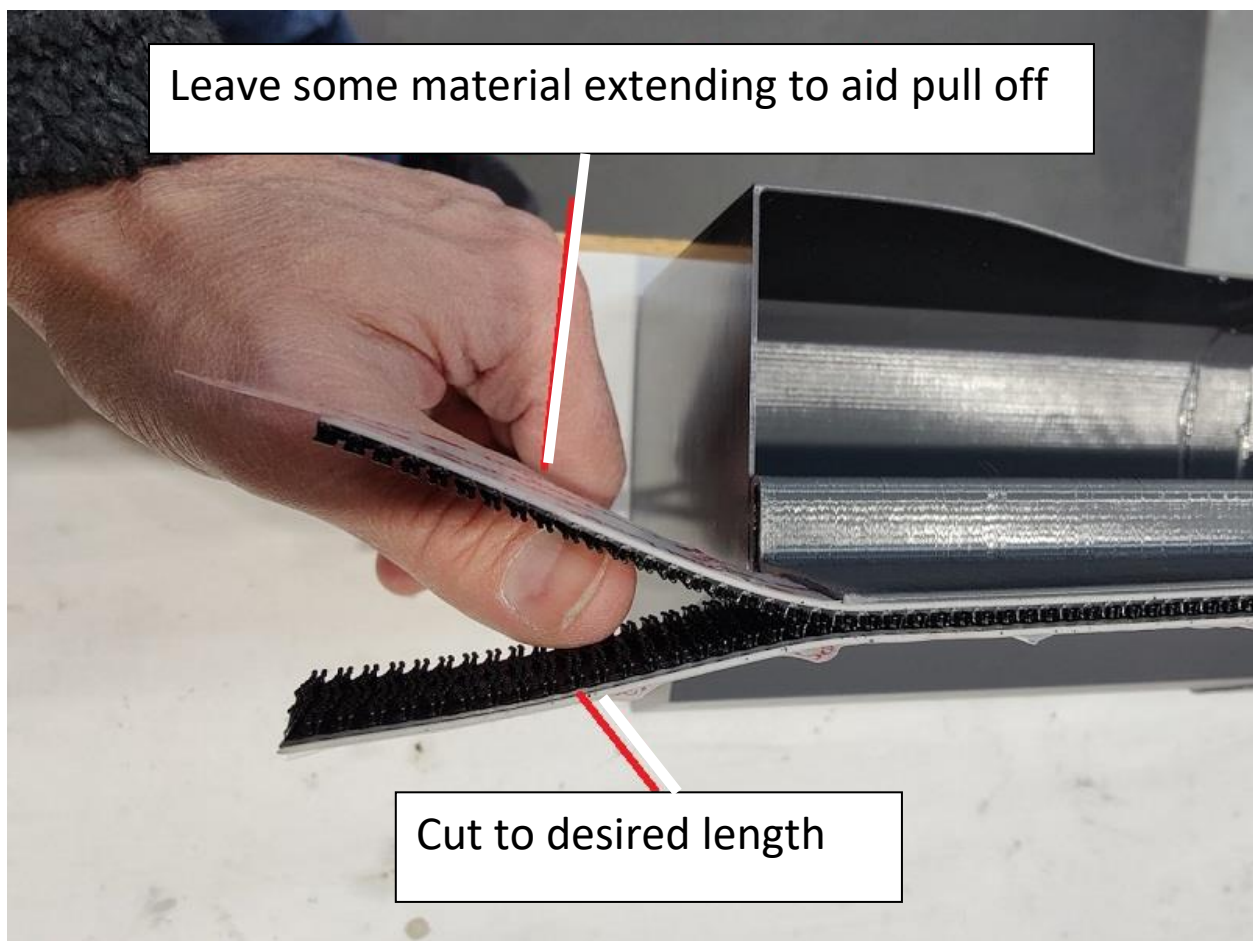
Note: Leave the 3M Dual Lock attached to itself during installation. For installation, only remove the backside adhesive protection.

- 1) Recommend to install tray  $\frac{1}{4}$  inch from the center post position in order to have room at the opposite outboard edge to fit hand to remove when needed.



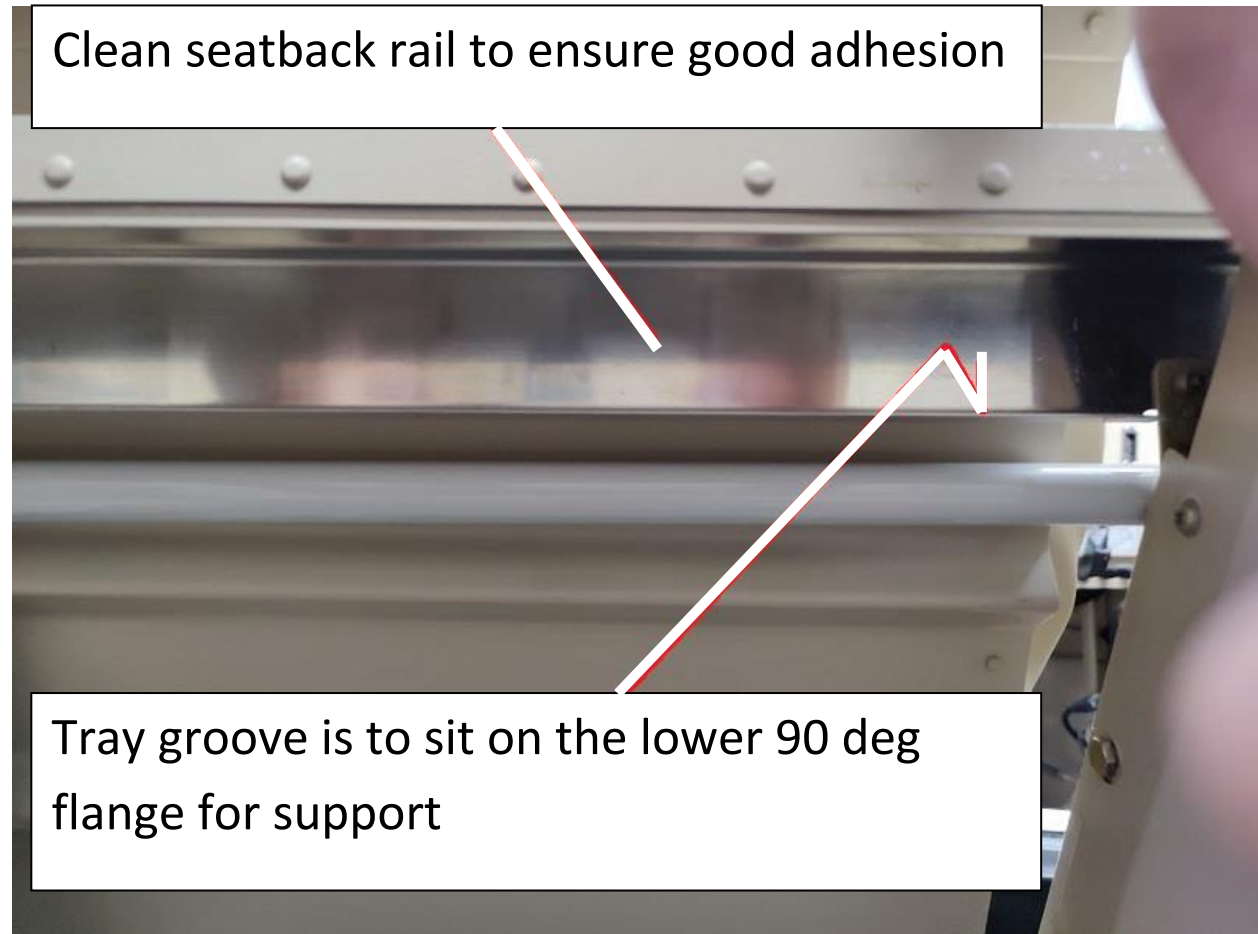
Note: Leave the 3M Dual Lock attached to itself during installation. For installation, only remove the backside adhesive protection.

- 2) Cut the outboard 3M Dual Lock to the desired length. It is beneficial to leave some additional 3M Dual Lock extending from the outboard edge in order to be able to pull with hand or pliers to ease removal, but it is not required if not desired.
- 3) Cut the inboard 3M Dual Lock (at the center post) flush with the tray.



Note: Leave the 3M Dual Lock attached to itself during installation. For installation, only remove the backside adhesive protection.

4) Clean seatback rail to ensure good adhesion.



- 5) Secure storage tray to seatback rail making sure the storage tray groove sits on the rail lower 90 bend for good support.
- 6) When the tray is in place, apply hand pressure to the adhesive by pressing on the tray upper flange to make good contact.

